

## Clinical Quiz

### What is the Diagnosis?

Case 1: DKK Ng

Case 2: A Lo, DKK Ng, ASF Chong

#### (A) Case 1 (Figures 1 & 2)

A 1-year-old girl presented with one episode of respiratory distress.

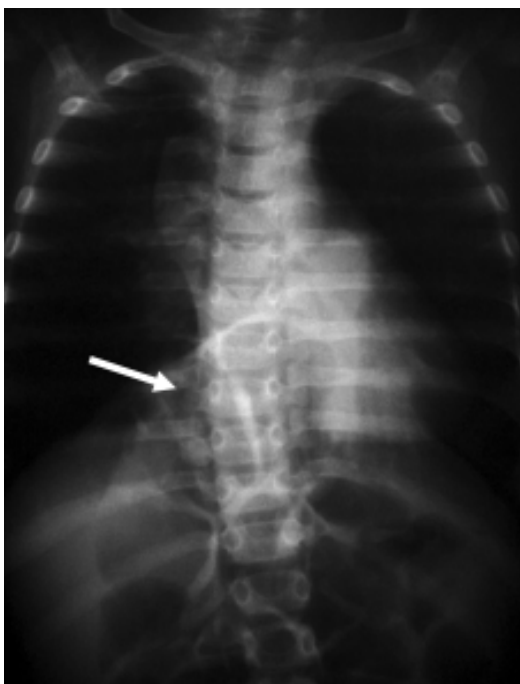


Figure 1 Chest radiograph (AP view).



Figure 2 Chest radiograph (lateral view).

The clinical quiz was prepared by:

DKK Ng  
Department of Paediatrics, Kwong Wah Hospital

A Lo  
Department of Paediatrics, Prince of Wales Hospital

ASF Chong  
Department of Radiology, Kwong Wah Hospital

#### Questions

1. What are the relevant findings in these radiographs.
2. What is the most likely diagnosis?

Answer to "Clinical Quiz" on Page 200

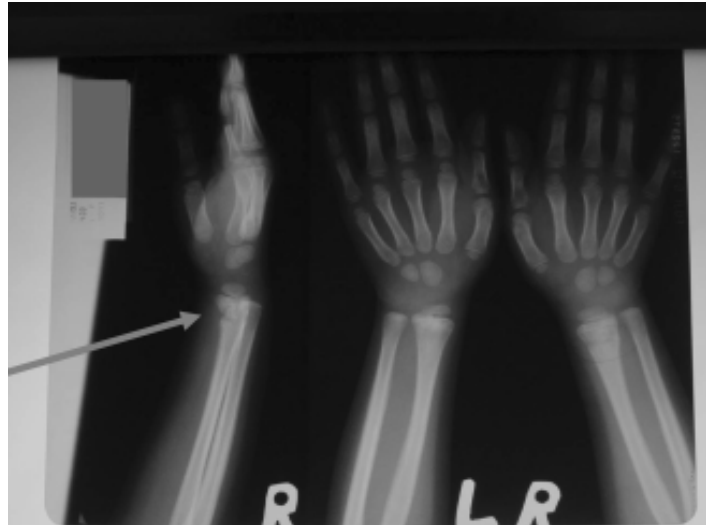
N.B. The Editors invite contributions of illustrative clinical cases or materials to this section of the journal.

**(B) Case 2 (Figures 3 & 4)**

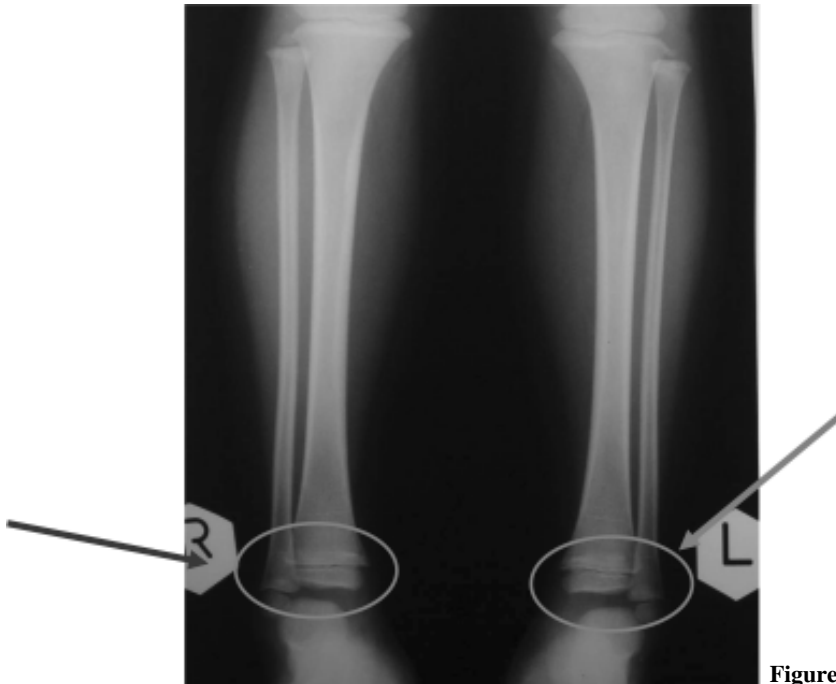
A 3-year-old girl presented with bilateral lower limb pain for 3 months.

**Questions**

1. What are the abnormalities?
2. What is the most likely diagnosis?



**Figure 3** Radiographs of both wrists.



**Figure 4** Radiographs of the ankles and legs.